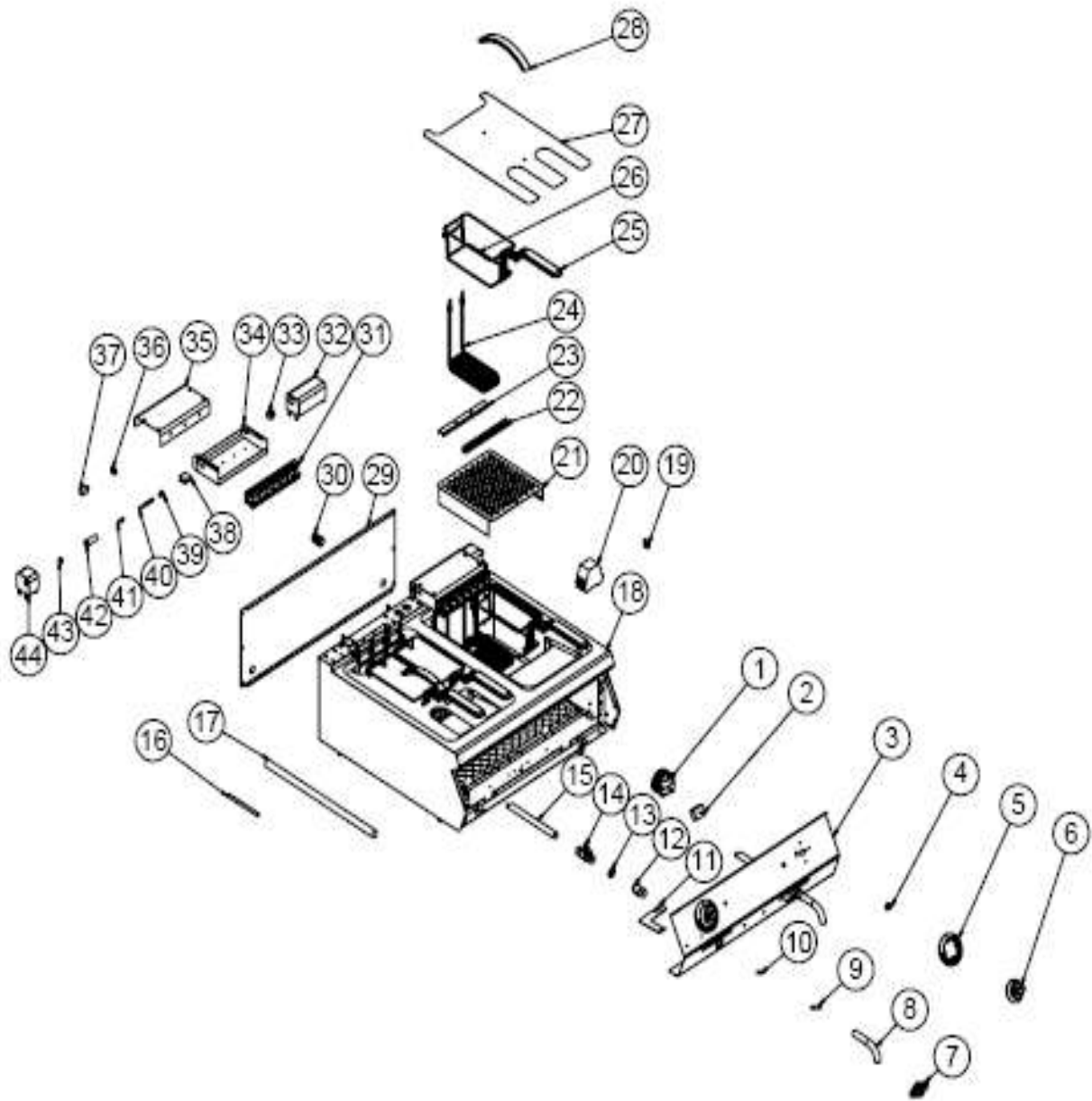


ФРИТЮРНИЦА ЭЛЕКТРИЧЕСКАЯ 700 СЕРИИ ТАТРА TEF.87



ФРИТЮРНИЦА ЭЛЕКТРИЧЕСКАЯ 700 СЕРИИ ТАТРА TEF.87

1	180 °C THERMOSTAT	M.ELK-MEK-TRM1-022	
2	230 °C LIMITOR	M.ELK-MEK-LMT-015	
3	FRONT PANEL	YSC-KNX.PG7-LZ-0392	
4	BUTTON SOCKET 6 MM	M.AKS-DGM-SKT-002	
5	100-180 °C BUTTON BUFFER	M.AKS-DGM-EMP-023	
6	BUTTON	M.AKS-DGM-EMP-024	
7	TICKET	M.AKS-OZL-MTL-006	
8	DRAIN PIPE	YBR-KNX.SNC-KS-0010	
9	SIGNAL LAMP	M.ELK-LMB-SNY-002	
10	M4 FRAME SPRING	M.YAY-PG-004	
11	VALVE ARM	YSC-KNX.PG7-LZ-1043	
12	DRAIN BUSH Ø30 MM	YTL-KNX.SNC-KS-0009	
13	ORING 3,5 * Ø 21	M.CNT-ORG-NP4-20-001	
14	VALVE 1/2 75 MM	M.MEK-TE-SINV-001	
15	DRAIN PIPE	YBR-KNX.PG7-KS-0018	
16	PIPE 150MM	YBR-KNX.SNC-KS-0008	
17	CABLE PIPE 450 MM	YBR-KNX.PG9-KS-0002	
18	CHASSIS	-	
19	NO:2 25 MM TERMINAL	M.ELK-KLM-RKL-4*4-SRY	
20	LC1K1210M7 CONTACTOR	JP.M.ELK-KNT-KNT-022	
21	BASKET BOTTOM SHEET	YSC-KNX.PG7-PN-0912	
22	SUPPORT SHEET	YSC-KNX.PG7-LZ-0637	
23	SUPPORT SHEET	YSC-KNX.PG7-LZ-0638	
24	230V 3500W RESISTANCE	M.ELK-RZS-BRU-MKR-004	
25	16CM HANDLE	M.AKS-KLP-BKL-007	
26	25*13*11 CM BASKET	M.AKS-SPT-INX-034	
27	TOP COVER SHEET	YSC-KNX.PG7-LZ-0331	
28	243MM LONG HANDLE	M.AKS-KLP-LUX-003	
29	BACK SHEET METAL	YSC-KNX.PG7-PN-0398	
30	PG-16 CABLE FITTING	JP.M.ELK-RKR-PLS-001	
31	HANGER SHEET METAL	YSC-KNX.PG7-LZ-0338	
32	CONEXION SHEET	YSC-KNX.PG7-LZ-0393	
33	HINGEBUSH	YTL-KNX.PG7-KS-0011	
34	RESISTANCE CONEXION SHEET	YSC-KNX.PG7-LZ-0843	
35	RESISTANCE CONEXION SHEET	YSC-KNX.PG7-LZ-0842	
36	HINGE NUT	YTL-KNX.PG7-KS-0027	
37	HINGEBUSH	YTL-KNX.PG7-KS-0010	
38	SWITCH BS1010	M.ELK-SWC-EMAS-002	
39	LOCK CONNECTION	YTL-KNX.PG7-KS-0008	
40	LOCK INNER SHAFT	YTL-KNX.PG7-KS-0007	
41	SPRING Ø14*75MM	M.YAY-PG-002	
42	LOCK OUTER BUSH	YTL-KNX.PG7-KS-0006	
43	HANDLE	YTL-KNX.PG7-KS-0009	
44	RESISTANCE CONEXION SHEET	YSC-KNX.PG7-LZ-0335	